



MEMORANDUM

To: Robert Miller
Turner Construction

From: Zack Dennis
ATS Consulting

Date: December 1, 2010

Subject: Monthly Noise Report for Lakeside Villas Noise Monitor, November 2010

This memorandum presents the results of the noise monitoring at the Lakeside Villas residential complex near the West Los Angeles College (WLAC) campus. The monitor is positioned near the property lines of the Lakeside Villas complex to monitor traffic noise and construction noise from projects taking place on the WLAC campus. The monitor is an independent station consisting of a microphone, sound level meter, cell phone modem, and assorted ancillary equipment. The location of the monitor is shown in Appendix A.

Monthly Summary: The noise levels at Monitor 8 were similar to those in previous months, and power supply issues appear to have been solved. Hourly noise levels were typically between 55 and 60 dBA during the daytime due to traffic on Freshman Drive and fell off substantially at night. Noise levels on the weekends are typically between 50 and 55 dBA during the daytime. The only unusual events observed during the period measured were several peaks during the Thanksgiving holiday that were unrelated to campus activity.



Table 1. Summary of Monthly Results, Monitor 8				
Metric	Sound Level, dBA			
	Average	Maximum²	Minimum³	Standard Deviation
Day-Night Sound Level (Ldn)	56	60	50	2.9
Work Hours Leq ¹	56	61	45	3.5

Notes:
1. The Work Hours Leq is the energy average between 8 a.m. to 6 p.m. on weekdays and 9 a.m. to 5 p.m. on Saturdays.
2. The maximum Ldn or daytime hourly Leq value during the month.
3. The minimum Ldn or daytime hourly Leq value during the month.

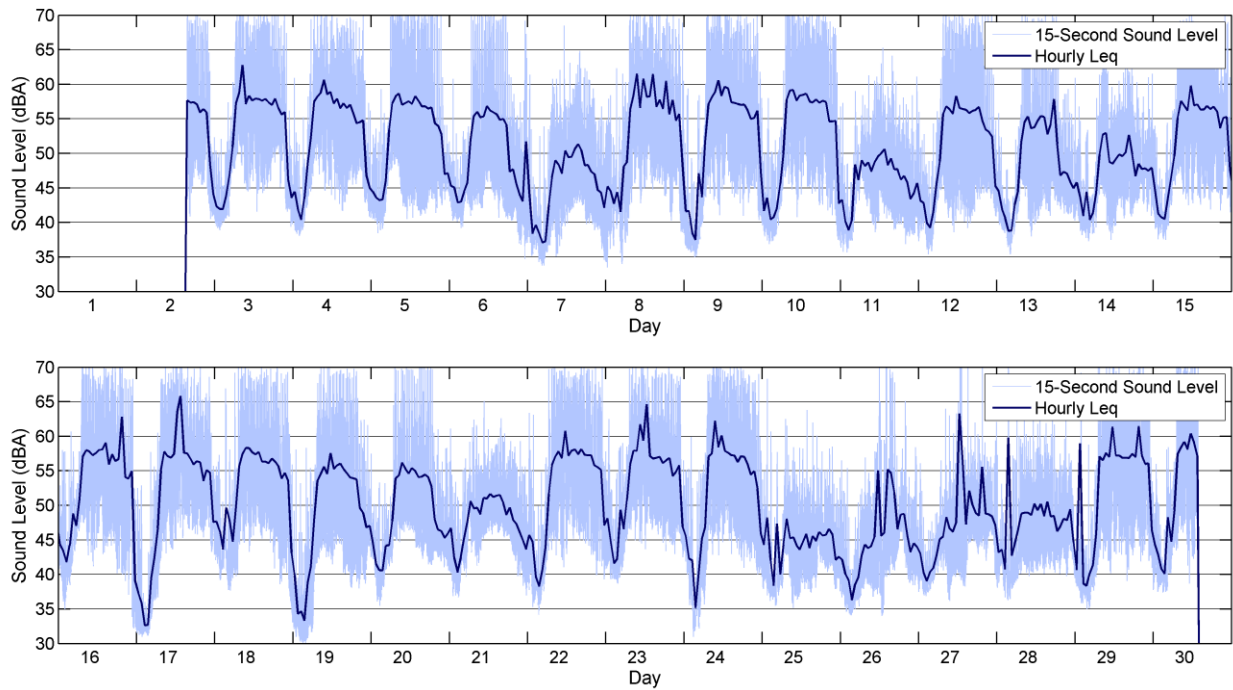


Figure 1: Monitor 8 Hourly Leq Results



APPENDIX A: RESULTS FOR INDIVIDUAL MONITOR SITES

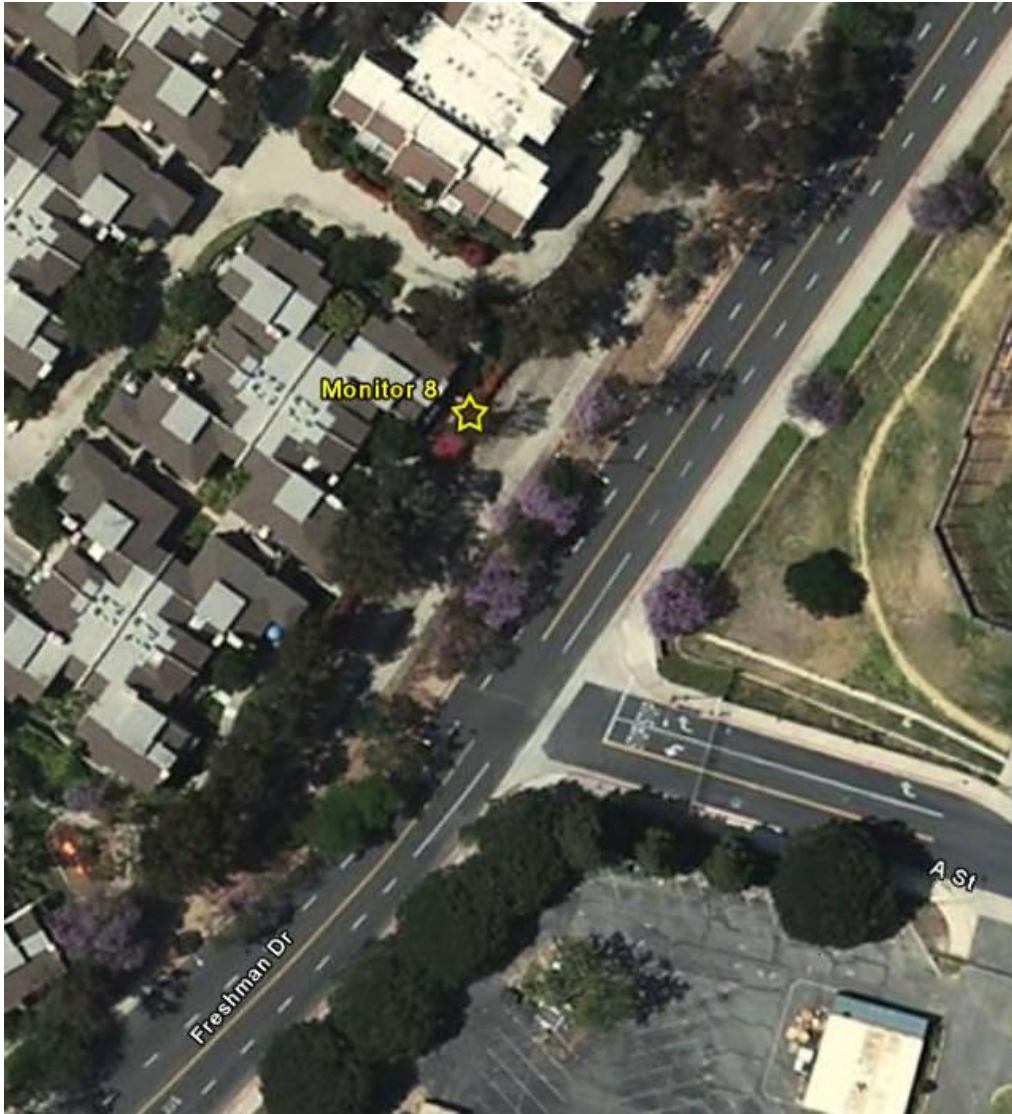


Figure 2: Noise Monitor Location

Monitor 8 is located near Building 15 in the south end of the Lakeside Villas complex, directly next to the property wall that separates the Building 15 pathway from the LADWP spillway. Prior to construction activity, the primary noise sources in this area were residential activity, landscaping equipment and lawnmowers, airplanes, athletic activity on the baseball field, and traffic noise from Freshman Drive and A Street.



Table 2. Daily Results Monitor 8, November 2010				
Date	Sound Level, dBA			
	Work Hours Leq	Maximum¹	Minimum²	Ldn
11/1/10	-- ³	-- ³	-- ³	-- ³
11/2/10	-- ³	-- ³	-- ³	-- ³
11/3/10	58	84	47	59
11/4/10	58	81	48	59
11/5/10	57	73	53	59
11/6/10	56	73	49	56
11/7/10		69	43	50
11/8/10	59	82	52	59
11/9/10	59	79	46	58
11/10/10	58	72	50	58
11/11/10	49	65	48	52
11/12/10	57	73	48	56
11/13/10	55	77	44	54
11/14/10		65	46	52
11/15/10	57	73	47	58
11/16/10	58	83	52	58
11/17/10	61	77	37	58
11/18/10	57	70	51	58
11/19/10	56	74	45	54
11/20/10	55	71	50	54
11/21/10		65	49	53
11/22/10	58	79	49	58
11/23/10	60	88	48	59
11/24/10	59	84	40	57
11/25/10	45	68	46	51
11/26/10	52	75	41	51
11/27/10	55	78	44	54
11/28/10		70	46	57
11/29/10	58	80	44	60
11/30/10	57	80	47	55

Notes:
1. The maximum sound level over a 15 second interval (15 second Leq) during the 24-hour period.
2. The minimum sound level over a 15 second interval (15 second Leq) during the 24-hour period.
3. Data not recorded due to power supply failure.

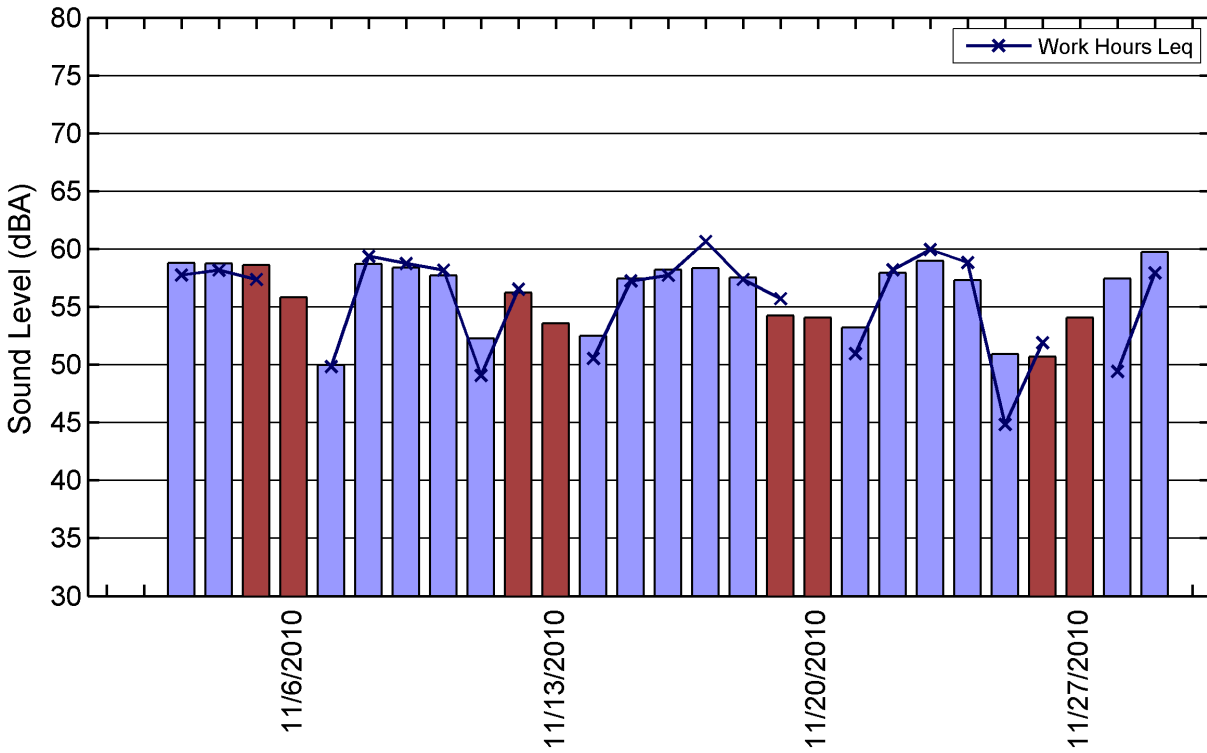


Figure 3: Monitor 8 Ldn and Daytime Leq Results



Table 3. Summary of Monthly Results, Monitor 8					
Month	Year	Sound Level, dBA			
		Work Hours Leq¹	Standard Deviation	Ldn	Standard Deviation
March	2009	58	2.8	58	2.7
April	2009	58	1.8	58	2.2
May	2009	--	--	--	--
June	2009	57	3.0	56	2.5
July	2009	55	1.9	56	1.5
August	2009	54	1.9	54	1.9
September	2009	56	2.9	56	2.9
October	2009	56	1.9	56	3.4
November	2009	56	3.7	55	3.1
December	2009	57	2.8	57	2.3
January	2010	52	3.1	59	2.4
February	2010	56	2.6	57	2.7
March	2010	57	2.3	56	2.4
April	2010	57	2.3	56	2.9
May	2010	55	3.4	55	2.6
June	2010	54	3.7	55	2.1
July	2010	--	--	--	--
August	2010	54	3.6	54	3.6
September	2010	56	2.9	55	3.1
October	2010	56	1.5	55	2.6
November	2010	56	3.5	56	2.9

Notes:
1. The work hours Leq is the energy average between 8 a.m. to 6 p.m. on weekdays and 9 a.m. to 5 p.m. on Saturdays.



APPENDIX B: BACKGROUND OF NOISE

Sound is mechanical energy transmitted by pressure waves in a compressible medium such as air. Noise is generally defined as unwanted or excessive sound. Sound can vary in intensity by over one million times within the range of human hearing. Therefore, a logarithmic scale, known as the decibel scale (dB), is used to quantify sound intensity and compress the scale to a more manageable range.

Sound is characterized by both its amplitude and frequency (or pitch). The human ear does not hear all frequencies equally. In particular, the ear deemphasizes low and very high frequencies. To better approximate the sensitivity of human hearing, the A-weighted decibel scale has been developed. A-weighted decibels are abbreviated as “dBA.” On this scale, the human range of hearing extends from approximately 3 dBA to around 140 dBA. As a point of reference, Figure 4 includes examples of A-weighted sound levels from common indoor and outdoor sounds.

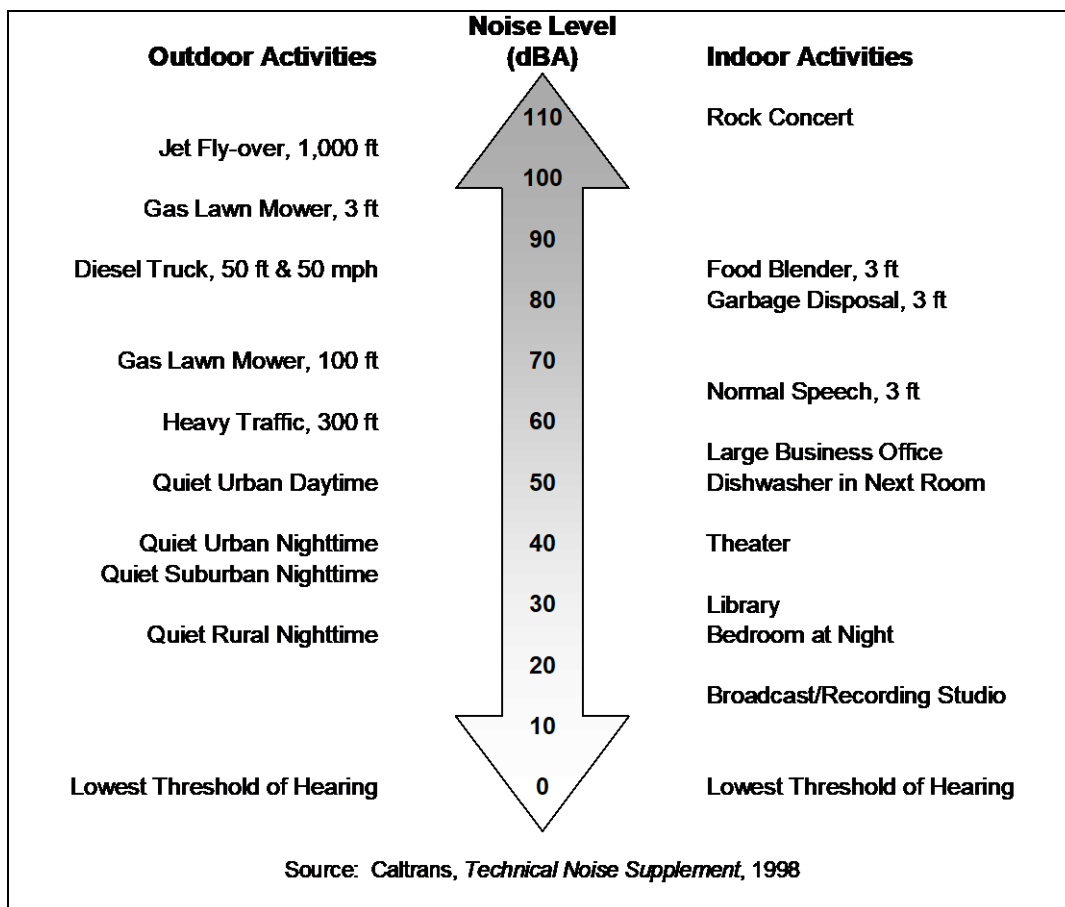


Figure 4. Typical Outdoor and Indoor Noise Sources

Using the decibel scale, sound levels from two or more sources cannot be directly added together to determine the overall sound level. Rather, the combination of two sounds at the same level yields an increase of 3 dBA. The smallest recognizable change in sound level is approximately 1 dBA. A 3-dBA



increase is generally considered perceptible, whereas a 5-dBA increase is readily perceptible. A 10-dBA increase is judged by most people as an approximate doubling of the perceived loudness.

Two of the primary factors that reduce levels of environmental sounds are increasing the distance between the sound source and the receiver and having intervening obstacles, such as walls, buildings or terrain features, that block the direct path between the sound source and the receiver. Factors that act to increase the loudness of environmental sounds include the proximity of the sound source to the receiver, sound enhancements caused by reflections, and focusing caused by various meteorological conditions.

Brief definitions of the measures of environmental noise used in this report are:

- **Equivalent Sound Level (Leq):** Environmental sound fluctuates constantly. The equivalent sound level (Leq), sometimes referred to as the energy-average sound level, is the most common means of characterizing community noise. Leq represents a constant sound that, over the specified period, has the same sound energy as the time-varying sound. The noise monitors currently measure sound in 15 second intervals and these are used to calculate the 1-hour Leqs.
- **Day-Night Sound Level (Ldn):** Ldn is basically a 24-hour Leq with an adjustment to reflect the greater sensitivity of most people to nighttime noise. The adjustment is a 10-dB penalty for all sound that occurs between 10 p.m. and 7 a.m. The effect of the penalty is that, when calculating Ldn, any event that occurs during the nighttime is equivalent to 10 of the same event during the daytime. Ldn is the most common measure of total community noise over a 24-hour period.
- **Work Hours Sound Level:** The work hours sound level is effectively a sound level based on the hours the haul road is expected to be used. For weekdays Monday through Friday, it consists of the Leq for the period between 8 a.m. and 6 p.m. For Saturdays, it consists of the Leq for the period between 9 a.m. and 5 p.m. The road is not expected to be used on Sunday.
- **Maximum Sound Level (Lmax):** The maximum sound level over a period of time or for a specific event can also be a useful parameter for characterizing specific noise sources. Standard sound level meters have two settings, FAST and SLOW, which represent different time constants. Lmax using the FAST setting will typically be 1 to 3 dB greater than Lmax using the SLOW setting.
- **Sound Exposure Level (SEL):** SEL is a measure of the total sound energy of an event. In essence, all sound from the event is compressed into a one-second period. This means that SEL increases as the event duration increases and as the event sound level increases. SEL is useful for estimating the Ldn that would be caused by individual events such as train passbys. Although the SEL values for the fifteen-second intervals are recorded (and reported along with the Leq values on the website), we are not using SEL's in any of our calculations.